

Key Words:

Hardware Independent Restore – IP Address Warning – Hardware not present – Active Directory

Situation:

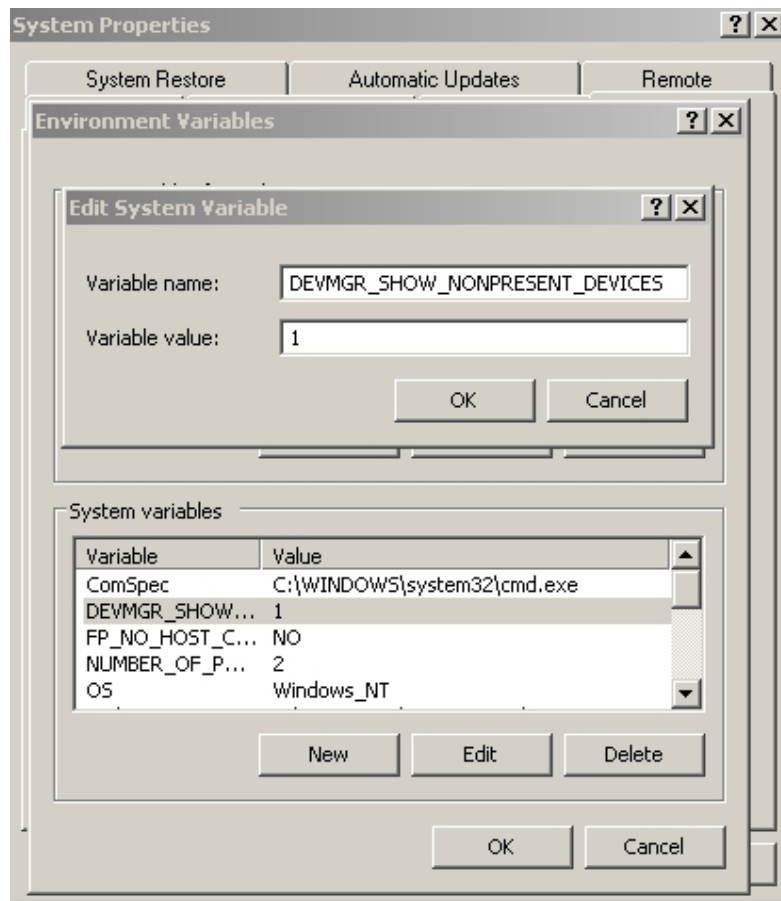
After a HIR (Hardware Independent Restore) you then attempt to assign the IP address from the old server to the newly restored server, you get a Microsoft Warning stating that this IP is assigned to a network adapter that is no longer installed. This is by design from Microsoft to ensure that if the network adapter does become active you have been warned and will end up with an IP address conflict.

Please note this is very important with regard to restoring an Active Directory Domain Controller Eg Normal DC's and or SBS2003.

Solution:

To rectify this issue you will need to do the following two items, preferably in Safe Mode for normal servers and Active Directory restore mode for Domain Controllers(please see item 3 Below):-

1. Add the following environment variable into the system environment variables DEVMGR_SHOW_NONPRESENT_DEVICES (NOTE all capitals) with a value of 1. To get to this value go to the "Start Menu" , right click on "my Computer" and select "Properties" – then go "advanced" and "Environment Variables" under "system Variables" select "new" and type values as listed above – click "OK" three times. Note – see image after item 2
2. In Device Manager, use the right mouse click and select "Show hidden Devices" then navigate to network adapters. In this section you will find that some network adapter devices are greyed out or faint outlines. These devices are not present and can safely be removed by right clicking and selecting "uninstall". NOTE ensure that the device manager window is not opened until the environment variable has been created as the Device Manager MMC will not refresh.



3. Active Directory Domain Controllers (DC) require special attention – when the first boot of a restored DC happens hit F8 and select AD restore mode, this ensures that AD will not run. Perform all the steps above and ensure that the correct IP address is configured to the LAN interface; this may take up to two reboots. If this is not done and the server is allowed to boot normally it will sit at the “Preparing Network Connections” for a considerable amount of time and possibly still fail.

Technical Information:

This solution can also be used to remove all other devices not present on the new server.

Additional information about the cause of this error

NA